

MANDATORY DISCLOSURE

Appendix 8
Format for Mandatory Disclosure

Mandatory Disclosure updated on

1) AICTE File No.

Date & Period of last approval

2) Name of the Institution - UIET, CHHATRAPATI SHAHUJI MAHARAJ UNIVERSITY, KANPUR

Address of the Institution - C.S.J.M. UNIVERSITY, Kalyanpur Kanpur

City & Pin Code - Kanpur, 208024

State / UT - U.P

Longitude & Latitude -

Phone number with STD code - 05122570636

FAX number with STD code - 05122570006

Office hours at the Institution - 10:00 am – 05:00 pm

Academic hours at the Institution - 10:00 am – 05:00 pm

Email

Website - www.kanpuruniversity.org

Nearest Railway Station(dist in Km) - Kanpur Central , 15 Kms

Nearest Airport (dist in Km) - Kanpur Chakeri, 20 Kms

3) Type of Institution (Govt /Govt aided /University Dept /Deemed Univ /Private-Self Financed) – Govt Self financed

Category (1) of the Institution Non Minority / Minority specify minority :- Non Minority

Category (2) of the Institution Co-Ed / Women only - Co-Ed

4) Name of the organization running the Institution - CSJM University

Type of the organization Society / Trust / PPP

Address of the organization - C.S.J.M. UNIVERSITY, Kalyanpur Kanpur

Registered with -

Registration date -

Website of the organization - www.kanpuruniversity.org

5) Name of the affiliating University - C.S.J.M. UNIVERSITY

Address - C.S.J.M. UNIVERSITY, Kalyanpur Kanpur

Website - www.kanpuruniversity.org

Latest affiliation period -

6) Name of Principal / Director – Dr. Renu Jain

Exact Designation - Director

Phone number with STD code - 0512-2570450

FAX number with STD code - 0512-2570006

Email - jainrenu@gmail.com

Highest Degree - Ph.D.

Field of specialization - HEMBT(A Hybrid Example-Based Approach for Machine Translation)

7) Governing Board Members

The administrative & financial decisions are taken by the top management and circulated to lower management via middle management for implementation. The academic decisions are taken by the middle management and implemented by the middle and lower management. The management follows a top-down approach where the academic responsibilities are vested on the Director and the respective HODs. The administrative and financial duties are looked after the Director in coherence with the VC, Registrar and other officials of the administrative and finance department of the university.

Board of Governors

The Kuladhipati (The Chancellor)-- The Governor is the Kuladhipati (Chancellor) of the University. He by virtue of his office is the Head of the University and the President of the Court and when present, presides at meeting of the Court, and at any Convocation of the University.

The Kulpati (Vice-Chancellor) is a whole time salaried officer of the University and is appointed by the Chancellor from amongst the person whose names are submitted to him by a Committee constituted in accordance with the provisions above U.P state Universities Act 1973.

List of Members of Executive Council

1. Prof. H.K. Sehgal Vice Chancellor, C.S.J.M.U

- | | | |
|-----|------------------------------|---|
| 2. | Justice Vinod Chandra Mishra | 1-C Aukland Road, Allahabad |
| 3. | Prof. Abha Awasthi | A-1 Sector-B Aliganj, Lucknow |
| 4. | Dr. Mukul Chandra Pandey | 353 Triveni Nagar, Lucknow |
| 5. | Dr. Krishnveer Singh Kaushal | 140, North Idgah, Agra |
| 6. | Dr. P. K. Mathur | Dean, Science Dept. CSJMU |
| 7. | Prof. S. K. Srivastava | Dean, IBM CSJMU |
| 8. | Dr. Bhola Singh | Principle, D. N. College, Fatehgarh |
| 9. | Dr. S. K. Katiyar | Principal, G.S.V.M. Medical, Kanpur |
| 10. | Dr. Ramanand | Principal, Maharana pratap
Govt. P.G college, Hardoi |
| 11. | Dr. K. K. Behl | Reader, Life Science Dept. CSJMU |
| 12. | Shri Vijay Jaiswal | Lecturer, Education Dept. CSJMU |
| 13. | Dr. A. K. Kapoor | Physics Dept. VSSD College |
| 14. | Dr. B. D. Semval | Botany Dept. DAV College |
| 15. | Shri Surendra Singh Verma | Finance Officer, CSJMU |
| 16. | Shri Mahesh Chandra | Registrar, CSJMU |

8) Academic Advisory Body - Academic Council and Executive Council of the University

Frequency of meetings & date of last meeting

9) Organizational Chart

The following are the power and duties of the Kulpati (Vice-Chancellor):

1. The Vice-Chancellor is the principal executive and academic officer of the University and
 - a) Exercises general supervision and control over the affairs of the University including the constituent colleges and the Institute maintained by the University and its affiliated and associated colleges.

- b) Give effect to the decision of the authorities of the University.
 - c) In the absence of Kuladhipati (Chancellor) preside at meetings of the Court and at any convocation of the University.
 - d) Is responsible for maintenance of the discipline in the University.
2. Is responsible for holding and conducting the University examinations properly and at due times and for ensuring that the results of such examination are published expeditiously and that the academic session of the University starts and ends on proper dates. He is an ex-officio member and Chairman of the Executive Council Academic Council and the Finance Committee.
 3. He has the right to speak in and or otherwise take part in the meeting of any other authority or body of the University but will not by virtue of this sub-section be entitled to vote.
 4. It is the duty of the Kulpati (Vice-Chancellor) to ensure the faithful observance of the Act, the Statutes and the Ordinances and he possesses all such powers as may be necessary on that behalf.
 5. The Kulpati (Vice-Chancellor) has the power to convene or cause to be convened meetings of the Executive Council, the Court, the Academic Council and Finance Committee. Provided that he may delegate this power to any other officer of the University.
 6. Where any matter is of urgent nature requiring immediate action and the same can not be immediately dealt with by any officer or authority or other body of the University empowered by or under this Act to deal with it, the Kulpati (Vice-Chancellor) may take such action as he may deem fit and shall forthwith report the action taken by him to the Kuladhipati (Chancellor) and also to the officer, authority, or other body who or which in the ordinary course would have dealt with the matter.

Provided that no such action is taken by the Kulpati (Vice-Chancellor) with out the previous approval of the Kuladhipati (Chancellor) if it involves a deviation from the provisions of the Statutes or the Ordinances; If the officer, authority or other bodys of the opinion that such an action ought not to have been taken may refer the matter to the Kuladhipati (Chancellor) who may either confirm the action taken by the Kulpati Vice-Chancellor), annul the same or modify it in such a manner as he thinks fit and thereupon, it shall cease to have affect or as the case may be take effect in the modified form.

7. The Vice-Chancellor, exercises such powers as is laid down by the States and the Ordinances.

10) Student feedback mechanism on Institutional Governance / faculty Performance - Feedback forms are filled by students at the end of each semester and a detailed review of all faculty and related courses is done by the director with all the HODs.

11) Grievance redressal mechanism for faculty, staff and students - RTI Cell exists

12) Name of the Department*

Course - B.Tech.

Level UG / PG 1st Year of approval by the Council- UG

Year wise Sanctioned Intake CAY CAY CAY

AICTE Approved Intake during last 4 years							
	Courses	1 st Year of approval by AICTE (give approval ref. no. & date)	2009-2010	2008-2009	2007-2008	2006-2007	Status of Accreditation (Validity period)
			Sanctioned intake	Sanctioned intake	Sanctioned intake	Sanctioned intake	
UG (FT)	B.Tech	No. F 722-67-021(E)E T/96 dated 23.7.96	60 ECE*	60 ECE*	60 ECE*	60 ECE*	
			60 CHE*	60 CHE*	60 CHE*	60 CHE*	
			60 MEE *	60 MEE *	60 MEE *	60 MEE *	
			60 CSE *	60 CSE *	60 CSE *	60 CSE *	
			60 IT **	60 IT **	60 IT **	60 IT **	
			60 MSE **	60 MSE **	60 MSE **	60 MSE **	

15) Infrastructural information^

Administrative Area

Area Type	Room Number	Carpet Area (in Sq m)	Flooring	Painting Done	Electrification & Lighting	Furniture	Air Conditioning
Director Room	AB-107		Ground	Yes	Yes	Yes	Yes
Director Office	AB-108		Ground	Yes	Yes	Yes	No
Research Lab	AB-113		Ground	Yes	Yes	No	No
Lecture Room	AB-101	120 Seat	Ground	Yes	Yes	Yes	No
Lecture Room	AB-102	60 Seat	Ground	Yes	Yes	Yes	No
Lecture Room	AB-201	120 Seat	First	Yes	Yes	Yes	No
Lecture Room	AB-202	60 Seat	First	Yes	Yes	Yes	No
Lecture Room	AB-209	40 Seat	First	Yes	Yes	Yes	No
Lecture Room	AB-210	40 Seat	First	Yes	Yes	Yes	No
Lecture Room	AB-301	120 Seat	Second	Yes	Yes	Yes	No
Lecture Room	AB-302	60 Seat	Second	Yes	Yes	Yes	No
Lecture Room	AB-303	40 Seat	Second	Yes	Yes	Yes	No
Lecture Room	AB-304	40 Seat	Second	Yes	Yes	Yes	No
Lecture Room	AB-308	40 Seat	Second	Yes	Yes	Yes	No
Lecture Room	AB-309	40 Seat	Second	Yes	Yes	Yes	No
Lecture Room	AB-310	40 Seat	Second	Yes	Yes	Yes	No
Faculty Room	AB-103		Ground	Yes	Yes	Yes	No
Faculty Room	AB-104		Ground	Yes	Yes	Yes	No
Faculty Room	AB-114		Ground	Yes	Yes	Yes	No
Faculty Room	AB-115		Ground	Yes	Yes	Yes	No
Faculty Room	AB-203		First	Yes	Yes	Yes	No
Faculty Room	AB-204		First	Yes	Yes	Yes	No
Faculty Room	AB-207		First	Yes	Yes	Yes	No
Faculty Room	AB-211		First	Yes	Yes	Yes	No
Faculty Room	AB-212		First	Yes	Yes	Yes	No
Faculty Room	AB-213		First	Yes	Yes	Yes	No
Faculty Room	AB-214		First	Yes	Yes	Yes	No
Faculty Room	AB-215		First	Yes	Yes	Yes	No
Faculty Room	AB-216		First	Yes	Yes	Yes	No
Faculty Room	AB-217		First	Yes	Yes	Yes	No
Faculty Room	AB-218		First	Yes	Yes	Yes	No
Faculty Room	AB-305		Second	Yes	Yes	Yes	No
Faculty Room	AB-307		Second	Yes	Yes	Yes	No
Faculty Room	AB-311		Second	Yes	Yes	Yes	No
Office 1	AB-110		Ground	Yes	Yes	Yes	No
Office 2	AB-112		Ground	Yes	Yes	Yes	No
Entrance Exam Cell	AB-105		Ground	Yes	Yes	Yes	No
Exam Cell	AB-208		First	Yes	Yes	Yes	No
Store	AB-106		Ground	Yes	Yes	No	No
Store	AB-111		Ground	Yes	Yes	No	No
Store	AB-206		First	Yes	Yes	No	No
Store	AB-306		Second	Yes	Yes	No	No
Confidential Store	AB-205		First	Yes	Yes	No	No
Electricity Supply Room	AB-109		Ground	Yes	Yes	No	No
Bath Room	AB-116		Ground	Yes	Yes	No	No

Classroom/Tutorial Room facilities

Instructional Area

Programme	Course	Department	Area Type	Room Number	Carpet Area (in Sq-m)	Flooring	Painting Done	Electrification & Lighting	Furniture	Air Conditioning
Common for all			Lecture Room	L-1	400 Seat	First	Yes	Yes	Yes	Yes
			Lecture Room	L-2	60 Seat	First	Yes	Yes	Yes	No
			Lecture Room	L-3	60 Seat	First	Yes	Yes	Yes	No
			Lecture Room	L-4	60 Seat	First	Yes	Yes	Yes	No
			Lecture Room	L-5	60 Seat	Ground	Yes	Yes	Yes	No
			Lecture Room	L-6	60 Seat	Ground	Yes	Yes	Yes	No
			Lecture Room	L-7	60 Seat	Ground	Yes	Yes	Yes	No
			Lecture Room	L-8	120 Seat	Ground	Yes	Yes	Yes	No
			Lecture Room	L-9	120 Seat	Ground	Yes	Yes	Yes	No
			Faculty Room	L-10		First	Yes	Yes	Yes	No
			Faculty Room	L-11		First	Yes	Yes	Yes	No

Laboratory details

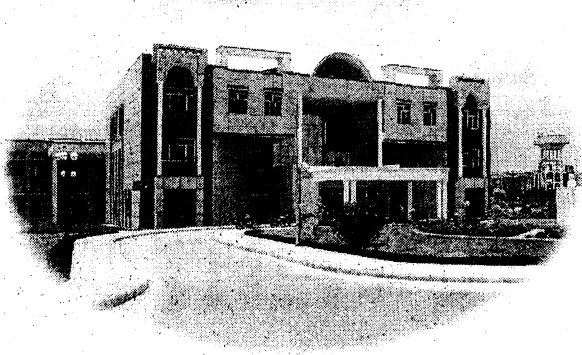
Laboratory

Course	Programme	Department	Laboratory Name
B.Tech.	Material Sc. & Matllurgical Engg.	MSME	Material Properties Lab
B.Tech.	Material Sc. & Matllurgical Engg.	MSME	Ceramic Lab
B.Tech.	Material Sc. & Matllurgical Engg.	MSME	Metallographic Lab
B.Tech.	Material Sc. & Matllurgical Engg.	MSME	Corrosion & NDT Lab
B.Tech.	Material Sc. & Matllurgical Engg.	MSME	Furnace Lab
B.Tech.	Information Technology	IT	Computer Lab-1
B.Tech.	Information Technology	IT	Computer Lab-2
B.Tech.	Information Technology	IT	Micro Processor Lab
B.Tech.	Computer Sc. & Engg.	CSE	Core Computer Lab
B.Tech.	Computer Sc. & Engg.	CSE	Intel Core2Duo Lab
B.Tech.	Computer Sc. & Engg.	CSE	Micro Processor Lab
B.Tech.	Computer Sc. & Engg.	CSE	Advance Computer Lab - I
B.Tech.	Computer Sc. & Engg.	CSE	Advance Computer Lab - II
B.Tech.	Electronics & Comm. Engg.	ECE	Basic Electrical & Electronics Lab
B.Tech.	Electronics & Comm. Engg.	ECE	Communication Lab
B.Tech.	Electronics & Comm. Engg.	ECE	Digital Electronics Lab
B.Tech.	Electronics & Comm. Engg.	ECE	Microprocessor Lab
B.Tech.	Electronics & Comm. Engg.	ECE	Basic Electronics / DIC Lab
B.Tech.	Electronics & Comm. Engg.	ECE	Microwave Lab
B.Tech.	Electronics & Comm. Engg.	ECE	Instrumentation Lab
B.Tech.	Electronics & Comm. Engg.	ECE	Digital Signal Processing Lab
B.Tech.	Mechanical Engg.	MEE	Material Testing Lab
B.Tech.	Mechanical Engg.	MEE	IC Engine Lab
B.Tech.	Mechanical Engg.	MEE	CAD Lab
B.Tech.	Mechanical Engg.	MEE	Vibration Lab
B.Tech.	Mechanical Engg.	MEE	RAC Lab
B.Tech.	Mechanical Engg.	MEE	Kinetics Lab
B.Tech.	Chemical Engg.	CHE	Reaction Lab
B.Tech.	Chemical Engg.	CHE	Unit Operation Lab
B.Tech.	Chemical Engg.	CHE	Library Room
B.Tech.	Chemical Engg.	CHE	IPC Lab
B.Tech.	Chemical Engg.	CHE	Petroleum Lab
MCA	Computer App.	CC	Computer Lab

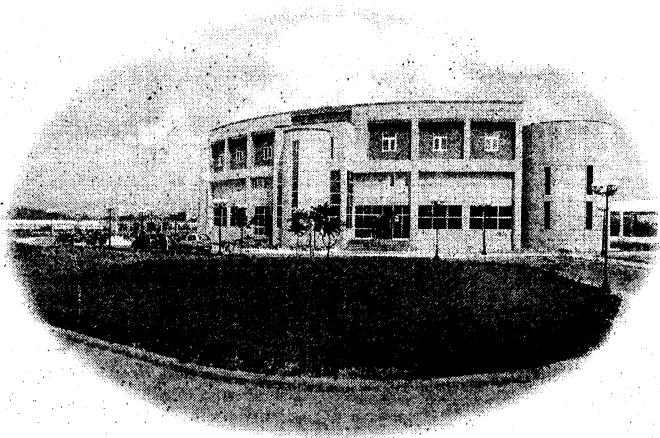
Computer Centre facilities



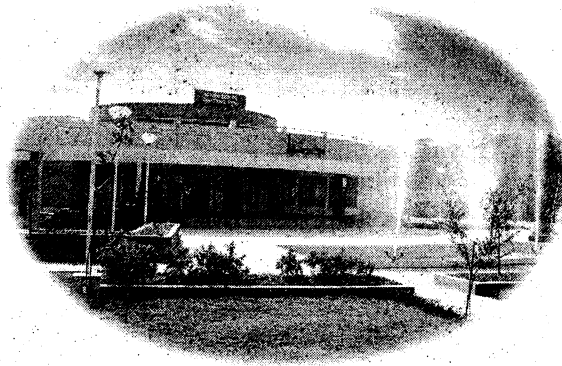
Library facilities



Auditorium / Seminar Halls / Amphi/ Lecturer Hall Complex



Cafeteria



Indoor Sports facilities [Photo](#)

Outdoor Sports facilities [Photo](#)

Gymnasium facilities



Facilities for disabled

Any other facilities [Photo](#)

16) Boys Hostel [Photo](#)

Girls Hostel [Photo](#)

Medical & other Facilities at Hostel [Photo](#)

17) Academic Sessions -

July - June

Examination system, Year / Sem -

Sem

Period of declaration of results

January & June

18) Counseling / Mentoring

Career Counseling

Total Carpet Area: - 2200 Square Meter

Administrative Area								
Area Type	Room Number	Carpet Area (in Sq m)	Flooring	Painting Done	Electrification & Lighting	Furniture	Air Conditioning	Error Message
Director Room	AB-107		Ground	Yes	Yes	Yes	Yes	
Director Office	AB-108		Ground	Yes	Yes	Yes	No	
Research Lab	AB-113		Ground	Yes	Yes	No	No	
Lecture Room	AB-101	120 Seat	Ground	Yes	Yes	Yes	No	
Lecture Room	AB-102	60 Seat	Ground	Yes	Yes	Yes	No	
Lecture Room	AB-201	120 Seat	First	Yes	Yes	Yes	No	
Lecture Room	AB-202	60 Seat	First	Yes	Yes	Yes	No	
Lecture Room	AB-209	40 Seat	First	Yes	Yes	Yes	No	
Lecture Room	AB-210	40 Seat	First	Yes	Yes	Yes	No	
Lecture Room	AB-301	120 Seat	Second	Yes	Yes	Yes	No	
Lecture Room	AB-302	60 Seat	Second	Yes	Yes	Yes	No	
Lecture Room	AB-303	40 Seat	Second	Yes	Yes	Yes	No	
Lecture Room	AB-304	40 Seat	Second	Yes	Yes	Yes	No	
Lecture Room	AB-308	40 Seat	Second	Yes	Yes	Yes	No	
Lecture Room	AB-309	40 Seat	Second	Yes	Yes	Yes	No	
Lecture Room	AB-310	40 Seat	Second	Yes	Yes	Yes	No	
Faculty Room	AB-103		Ground	Yes	Yes	Yes	No	
Faculty Room	AB-104		Ground	Yes	Yes	Yes	No	
Faculty Room	AB-114		Ground	Yes	Yes	Yes	No	
Faculty Room	AB-115		Ground	Yes	Yes	Yes	No	
Faculty Room	AB-203		First	Yes	Yes	Yes	No	
Faculty Room	AB-204		First	Yes	Yes	Yes	No	
Faculty Room	AB-207		First	Yes	Yes	Yes	No	
Faculty Room	AB-211		First	Yes	Yes	Yes	No	
Faculty Room	AB-212		First	Yes	Yes	Yes	No	
Faculty Room	AB-213		First	Yes	Yes	Yes	No	
Faculty Room	AB-214		First	Yes	Yes	Yes	No	
Faculty Room	AB-215		First	Yes	Yes	Yes	No	
Faculty Room	AB-216		First	Yes	Yes	Yes	No	
Faculty Room	AB-217		First	Yes	Yes	Yes	No	
Faculty Room	AB-218		First	Yes	Yes	Yes	No	
Faculty Room	AB-305		Second	Yes	Yes	Yes	No	
Faculty Room	AB-307		Second	Yes	Yes	Yes	No	
Faculty Room	AB-311		Second	Yes	Yes	Yes	No	
Office 1	AB-110		Ground	Yes	Yes	Yes	No	
Office 2	AB-112		Ground	Yes	Yes	Yes	No	
Entrance Exam Cell	AB-105		Ground	Yes	Yes	Yes	No	
Exam Cell	AB-208		First	Yes	Yes	No	No	
Store	AB-106		Ground	Yes	Yes	No	No	
Store	AB-111		Ground	Yes	Yes	No	No	
Store	AB-206		First	Yes	Yes	No	No	
Store	AB-306		Second	Yes	Yes	No	No	
Store	AB-205		First	Yes	Yes	No	No	
Confidential Store	AB-205		First	Yes	Yes	No	No	
Electricity Supply Room	AB-109		Ground	Yes	Yes	No	No	
Bath Room	AB-116		Ground	Yes	Yes	No	No	

Amenities Area

Area Type	Room Number	Carpet Area in Sqm	Flooring	Painting Done	Electrification & Lighting	Furniture/Sanitary Fittings	Air Conditioning	Error Message
UIET-2								
Material Testing Lab	MEE-101		Ground	Yes	Yes	Yes	No	
IC Engine Lab	MEE-103		Ground	Yes	Yes	Yes	No	
Mechanical Store	MEE-109		Ground	Yes	Yes	Yes	No	
CAD Lab	MEE-201		First	Yes	Yes	Yes	No	
Vibration Lab	MEE-204		First	Yes	Yes	Yes	No	
RAC Lab	MEE-301		Second	Yes	Yes	Yes	No	
Kinetics Lab	MEE-304		Second	Yes	Yes	Yes	No	
Reaction Lab	CHE-102		Ground	Yes	Yes	Yes	No	
Unit Operation Lab	CHE-107		Ground	Yes	Yes	Yes	No	
Library Room	CHE-208		First	Yes	Yes	Yes	No	
IPC Lab	CHE-211		First	Yes	Yes	Yes	No	
Petroleum Lab	CHE-310		Second	Yes	Yes	Yes	No	
Chemistry Lab	108		Ground	Yes	Yes	Yes	No	
Chemistry Store	110		Ground	Yes	Yes	Yes	No	
Research Lab	313		Second	Yes	Yes	Yes	No	
Electrical Panel Room	104		Ground	Yes	Yes	No	No	
Electrical Panel Room	205		First	Yes	Yes	No	No	
Electrical Panel Room	305		Second	Yes	Yes	No	No	
Class Room	105	60 Seat	Ground	Yes	Yes	Yes	No	
Class Room	106	60 Seat	Ground	Yes	Yes	Yes	No	
Class Room	206	60 Seat	First	Yes	Yes	Yes	No	
Class Room	207	60 Seat	First	Yes	Yes	Yes	No	
Faculty Room	202		First	Yes	Yes	Yes	No	
Faculty Room	203		First	Yes	Yes	Yes	No	
Faculty Room	209		First	Yes	Yes	Yes	No	
Faculty Room	210		First	Yes	Yes	Yes	No	
Faculty Room	302		Second	Yes	Yes	Yes	No	
Faculty Room	303		Second	Yes	Yes	Yes	No	
Faculty Room	306		Second	Yes	Yes	Yes	No	
Faculty Room	307		Second	Yes	Yes	Yes	No	
Faculty Room	308		Second	Yes	Yes	Yes	No	
Faculty Room	309		Second	Yes	Yes	Yes	No	
Faculty Room	311		Second	Yes	Yes	Yes	No	
Faculty Room	312		Second	Yes	Yes	Yes	No	
UIET-1								
Basic Electrical & Electronics Lab	ECE-101		Ground	Yes	Yes	Yes	No	
Communication Lab	ECE-102		Ground	Yes	Yes	Yes	No	

	First	Yes	Yes	Yes	No	
	First	Yes	Yes	Yes	No	
	First	Yes	Yes	Yes	No	
	Second	Yes	Yes	Yes	No	
	Second	Yes	Yes	Yes	No	
	Second	Yes	Yes	Yes	No	
	First	Yes	Yes	Yes	No	
	First	Yes	Yes	Yes	No	
	Ground	Yes	Yes	Yes	No	
	Ground	Yes	Yes	Yes	No	
	Ground	Yes	Yes	Yes	No	
60 Seats	Ground	Yes	Yes	Yes	No	
60 Seats	First	Yes	Yes	Yes	No	
60 Seats	Second	Yes	Yes	Yes	No	
	First	Yes	Yes	Yes	No	
	First	Yes	Yes	Yes	No	
	First	Yes	Yes	Yes	No	
	First	Yes	Yes	Yes	No	
	Second	Yes	Yes	Yes	No	
	Second	Yes	Yes	Yes	No	
	Second	Yes	Yes	Yes	No	
	Second	Yes	Yes	Yes	No	
	Second	Yes	Yes	Yes	No	
	Second	Yes	Yes	Yes	No	
	Ground	Yes	Yes	No	No	
UIET-3						
	Ground	Yes	Yes	Yes	No	
	Ground	Yes	Yes	Yes	No	
	Ground	Yes	Yes	Yes	No	
	Ground	Yes	Yes	Yes	No	
	Ground	Yes	Yes	Yes	No	
60 Seat	Ground	Yes	Yes	Yes	No	
60 Seat	Ground	Yes	Yes	Yes	No	
110 Seat	Ground	Yes	Yes	Yes	No	
	Ground	Yes	Yes	Yes	No	
	Ground	Yes	Yes	Yes	No	
	Ground	Yes	Yes	Yes	No	
	First	Yes	Yes	Yes	Yes	
	First	Yes	Yes	Yes	Yes	
	First	Yes	Yes	Yes	Yes	
60 Seat	First	Yes	Yes	Yes	No	

Lecture Room	IT-202	60 Seat	First	Yes	Yes	Yes	No	
Tutorial Room	IT-204	30 Seat	First	Yes	Yes	Yes	No	
Tutorial Room	IT-205	30 Seat	First	Yes	Yes	Yes	Yes	
Hall	IT-207		First	Yes	Yes	Yes	No	
Faculty Room	IT-203		First	Yes	Yes	Yes	No	
Faculty Room	IT-210		First	Yes	Yes	Yes	No	
Faculty Room	IT-211		First	Yes	Yes	Yes	No	
Faculty Room	IT-212		First	Yes	Yes	Yes	No	
Faculty Room	IT-213		First	Yes	Yes	Yes	No	
Computer Sc. & Engg.								
Core Computer Lab	CSE-106 (A)		Ground	Yes	Yes	Yes	Yes	
Server Room	CSE-106 (B)		Ground	Yes	Yes	Yes	No	
Intel Core2Duo Lab	CSE-201		First	Yes	Yes	Yes	No	
Micro Processor Lab	CSE-204		First	Yes	Yes	Yes	Yes	
Advance Computer Lab - I	CSE-205		First	Yes	Yes	Yes	Yes	
Advance Computer Lab - II	CSE-207		First	Yes	Yes	Yes	No	
APEC Office	CSE-102		Ground	Yes	Yes	Yes	No	
Generator Room			Ground	Yes	Yes	No	No	
Electricity Supply Room			Ground	Yes	Yes	No	No	
UPS Room	CSE-206		First	Yes	Yes	No	No	
Lecture Room	CSE-301		Second	Yes	Yes	Yes	No	
Lecture Room	CSE-303		Second	Yes	Yes	Yes	No	
Faculty Room	CSE-101		Ground	Yes	Yes	Yes	Yes	
Faculty Room	CSE-103		Ground	Yes	Yes	Yes	No	
Faculty Room	CSE-104		Ground	Yes	Yes	Yes	No	
Faculty Room	CSE-105		Ground	Yes	Yes	Yes	No	
Faculty Room	CSE-202		First	Yes	Yes	Yes	No	
Faculty Room	CSE-203		First	Yes	Yes	Yes	No	
Faculty Room	CSE-302		Second	Yes	Yes	Yes	No	