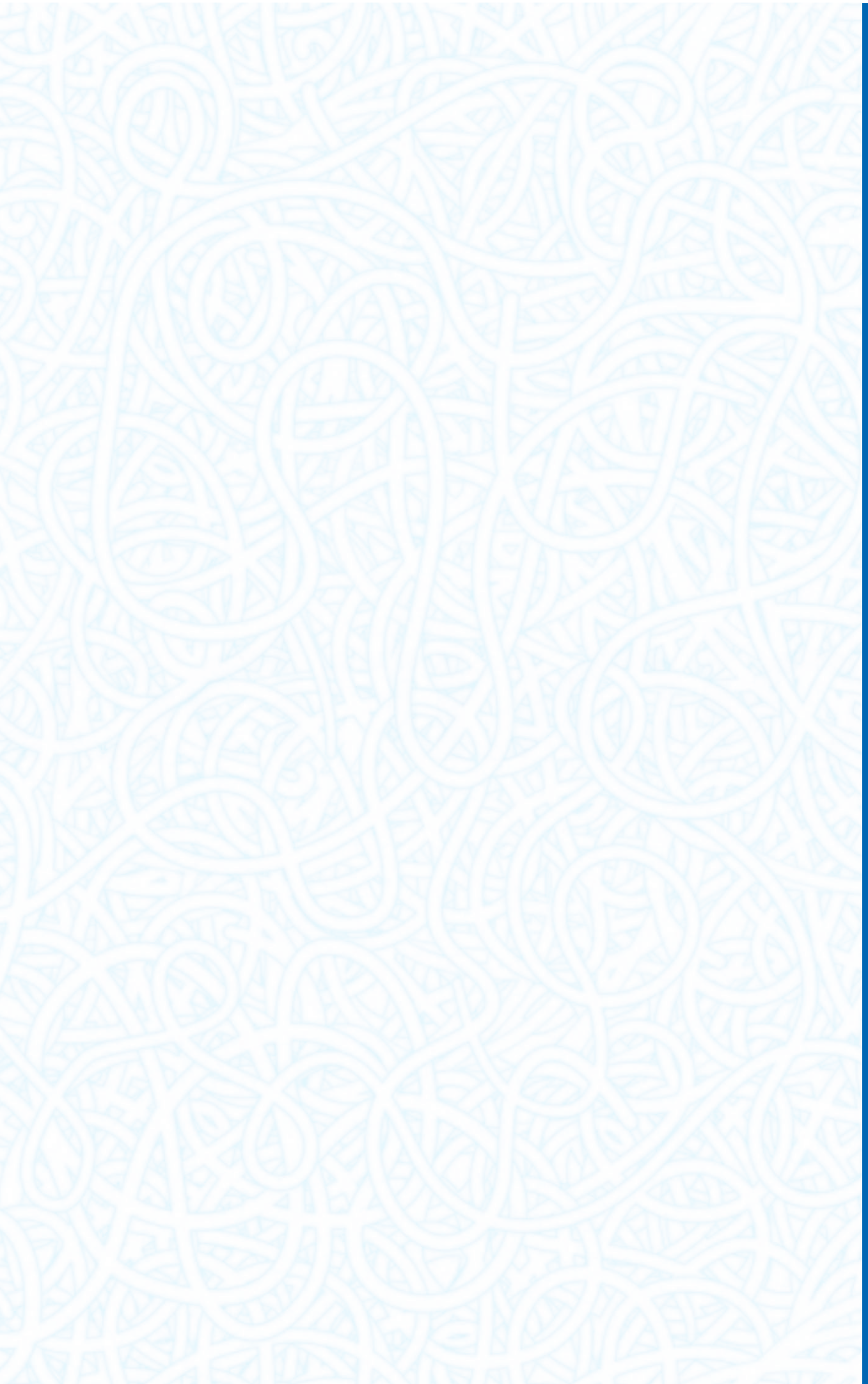


अनुक्रमणिका

क्र.सं. विषय	लेखक	पृ.सं.
1. Chhatrapati Shahu Ji Maharaj University, Kanpur (Formerly Kanpur University, Kanpur)	Dr. Anshu Yadav	19
2. Infrastructural Highlights of the University	Dr. Anshu Yadav	21
3. छत्रपति शाहू जी महाराज विश्वविद्यालय, कानपुर के पूर्व कुलपति		35
4. छत्रपति शाहू जी महाराज विश्वविद्यालय, कानपुर द्वारा प्रदत्त मानद उपाधियाँ		37
5. Chhatrapati Shahu Ji Maharaj University, Kanpur A Grand Future Ahead	Prof. Rakesh Chandra Katiyar	41
6. कानपुर विश्वविद्यालय से छत्रपति शाहू जी महाराज विश्वविद्यालय, कानपुर की विकास यात्रा	हरिभाऊ खाण्डेकर	43
7. श्री रामनाथ कोविन्द अतीत के आइने में	डॉ. राकेश शुक्ल	47
8. हमारा कानपुर : एक विमर्श	नीलाम्बर कौशिक	51
9. कानपुर का साहित्यिक अवदान	नलिनी कौशिक	55
10. कानपुर के पर्यटन स्थल	छाया अग्रवाल	57
11. वैदिक गणित : भारतीय सनातन ज्ञान परम्परा का द्योतक	सुजीत सिंह	59
12. भारतीय जनतंत्र और शिक्षा	डॉ. सोमेन्द्र सिंह	61
13. जल संरक्षण	विकास रोहतगी	63
14. न सोचेंगे कुछ, जतन अब करेंगे	डॉ. कामायनी शर्मा	64
15. हमारा शहर कानपुर	डॉ. कामायनी शर्मा	64
16. गजल	सुरेश गुप्त 'राजहंस'	65
17. हे कलमकार	डॉ. गया प्रसाद शर्मा 'पांचाल'	65
18. Swachh Bharat Abhiyan - Are we really a cleaner India now ?	Manish Mehrotra, Kavita Mehrotra	67
19. समय के साथ कदमताल करता विश्वविद्यालय	डॉ. सुरेश अवस्थी	69
20. माननीय राष्ट्रपति जी का गुरुजनों के प्रति आदरभाव	डॉ. दिवाकर मिश्र	69
21. उच्च शिक्षा और छत्रपति शाहू जी महाराज विश्वविद्यालय	सुधीर कुमार पाल	70
22. C.S.J.M. University Alumni Association, Kanpur Our Founder Members		73

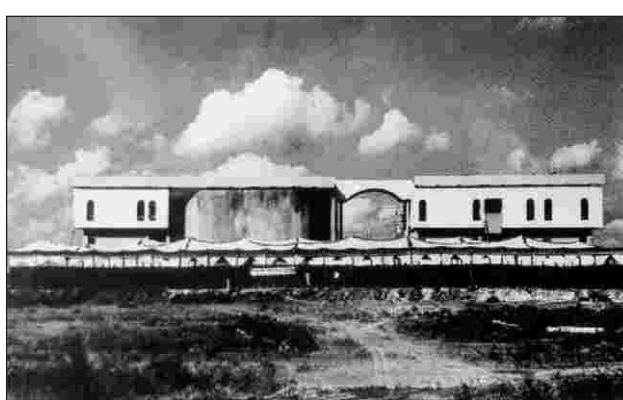


CHHATRAPATI SHAHU JI MAHARAJ UNIVERSITY, KANPUR (FORMERLY KANPUR UNIVERSITY, KANPUR)

THE GENESIS AND GROWTH

Chhatrapati Shahu Ji Maharaj University, Kanpur (Formerly Kanpur University, Kanpur) was established in 1966 under the Kanpur and Meerut Universities Act 1965. In the preamble it is stated that Kanpur University will have an affiliating character in the beginning but will gradually assume the shape of a residential University.

In the beginning the University had its office in a private house at Parbati Bagla Road on the VIP road but later it was shifted to a bungalow in Sarvodaya Nagar Kanpur. Initially the University did not have its own building. Later on in the year 1971-1972, 264 acres of land by the side of G.T. Road at Kalyanpur was purchased with the assistance of the State Government and Kanpur Municipal Corporation. Construction was started in 1970s and the Administrative Block, the old Guest House, The Vice Chancellor's Bungalow, the Registrar and Finance Officer's and Employees' residences were constructed in the first phase. Upto the year 1993-1994 there was very little development in the University. There were only 84 affiliated colleges, 11 faculties and 4000 teachers and 80000 students. About 100000 Students used to appear as private candidates in B.A., B.Sc., B.Com., M.A. and M.Com. Examinations. In the year 2004 there were 202 undergraduate and post graduate colleges affiliated to the University spreading over 15 districts of Uttar Pradesh. Out of these 202 colleges, 77 colleges were aided colleges and 125 self finance colleges. There were 20 ayurvedic and Unani colleges affiliated to the University which included 10 Government colleges and 10 private colleges. Also there were constituent colleges of the University which included G.S.V.M. Medical College and Nursing College. In the year 1993-1994 the financial position of the University was very poor. The University was running into bank overdraft of millions of rupees, academic session of the University was very irregular, there was no academic calendar and examinations were held in the



Bungalow at Sarvodaya Nagar, Kanpur from where Kanpur University started functioning initially

months of August and September and examination results were declared very late.

There have been several turnaround developments in the University since 1994. The University became a leading educational centre where students of various religious and cultural backgrounds studied and worked together in a congenial atmosphere. The University geared to provide maximum scholastic benefits to each individual student. By the year 1997 Chhatrapati Shahu Ji Maharaj University, Kanpur had not only become the first University of State to have regularised its academic session but had also restored the sanctity of the examination and the credibility of its degrees, The University established its residential character by starting a number of job oriented and vocational courses including the prestigious University Institute of Engineering and Technology in the campus which produced its first batch of qualified engineers in the year 2000. The University has not looked back since then and it has become a hall mark of higher education in the State catering to more than 10 lakh students at present times studying in more than 1000 affiliated colleges and university campus. The University is known for its regularity of academic sessions, more than 75% attendance of its regular students in the classes, and growth of academic environment and development of infrastructural facilities and job oriented courses in the University campus.

In the University campus the students are enrolled mostly in professional and job oriented courses but in affiliated colleges whether aided or self-financed ones, the students are enrolled in academic programmes in the faculties of arts, science, commerce, agriculture, law, management, medicine and Ayurveda.



Administrative Block of Kanpur University, Kanpur
constructed in 1970s.

INFRASTRUCTURAL HIGHLIGHTS OF THE UNIVERSITY



THE ADMINISTRATIVE BLOCK

The administrative block assists the University in various administrative matters related to research, examination, courses offered by the University Board of studies, Board of Faculty Meetings, Research Degree Committee Meetings, Academic Council Meetings, Executive Council Meetings etc. The administrative block comprises of various departments like general department, affiliation, examination and academic department, research department accounts and finance department, degree section etc.

THE EDP CENTRE

This is a data processing centre of the University. The statistical records of the University students, research scholars and research guides and supervisors are maintained in the EDP centre. The centre provides an up to date management information system and caters to the statistical information needs of students, research scholars and officers of the University and helps in budget preparation pay roll preparation etc.

BANKING AND SHOPPING COMPLEXES

Banking and post office facilities have been provided in the university campus. There are CSJM University, Kalyanpur, Kanpur branches of two nationalised banks: namely Union Bank of India and Bank of Baroda. Besides, post office and shops are functional in separate buildings.

THE CENTRAL EVALUATION BUILDING

A separate building has been constructed for carrying out centralised evaluation of answer books of candidates of various examination conducted by the University. This is a three storied fully air conditioned building , well equipped with adequate furniture, hot and cold-water facilities etc. The examiners and experts feel comfortable while evaluating answer scripts in the building.





THE CAFETERIA

The cafeteria caters to Breakfast, Lunch, Dinner and refreshment needs of the students, teachers, employees, officers, examiners, experts and other guests visiting the University. The cafeteria is well equipped with adequate furniture, green and serene lawns and water tanks and other facilities. The cafeteria is a place worth sitting for meals.

STADIUM

The huge stadium has been constructed in the University campus. It is used for sports activities like 400 metres race, hammer throw, long jump, short jump, cricket tournament basketball, badminton and volley ball court, Kho-Kho, kabaddi, volley ball, hockey etc. The stadium is open for sports activities of students, teachers, officers and employees of the University and teachers and students of affiliated colleges of the University.



THE MULTIPURPOSE HALL

The Multi-Purpose Hall is situated in the centre of the University Campus. It has a capacity of more than 1000 persons. The hall is used for indoor games such as badminton, table tennis, cultural programmes like classical dance, debate, poster making, Rangoli, cartooning, one act play, mimicry etc. The intercollegiate youth festival, north zone badminton, book exhibition and international yoga day are also organised in the multi-purpose hall.



DEENDAYAL SHODH KENDRA

In view of Pt. Deendayal Upadhyaya's long association with Kanpur, C.S.J.M University of Kanpur launched "DEENDAYAL SHODH KENDRA", (Deendayal Research Center) in order to conduct researches on problems related to interdisciplinary humanities and social sciences in general and on socio-economic thought of Pt. Deendayal Upadhyaya in particular.