



**CHHATRAPATI SHAHU JI MAHARAJ UNIVERSITY**  
(Formerly Kanpur University, Kanpur)  
Kanpur UP – 208024

---

**A**

# **Student Satisfaction Survey Report** **2017-18**

**Under Caption 2.7**  
**In**

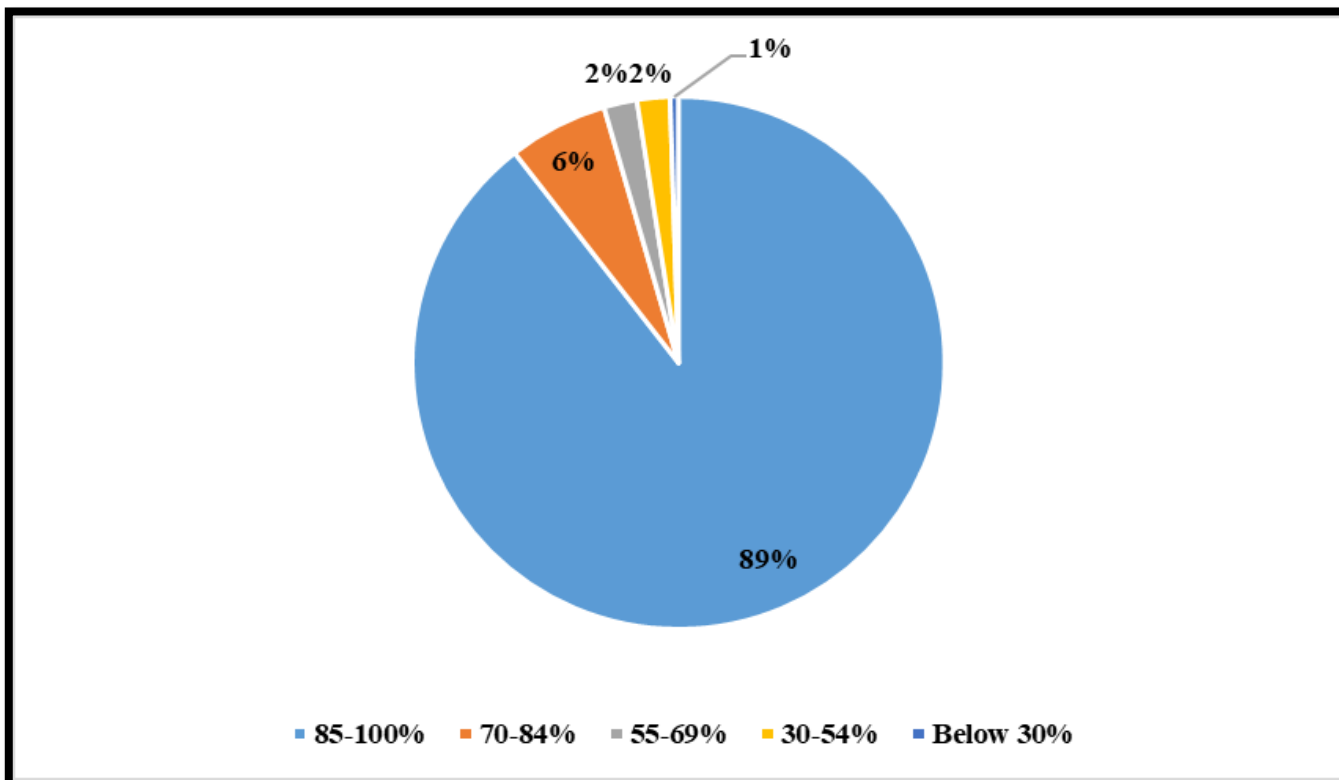
**Criteria – II**  
**Teaching, Learning & Evaluation**



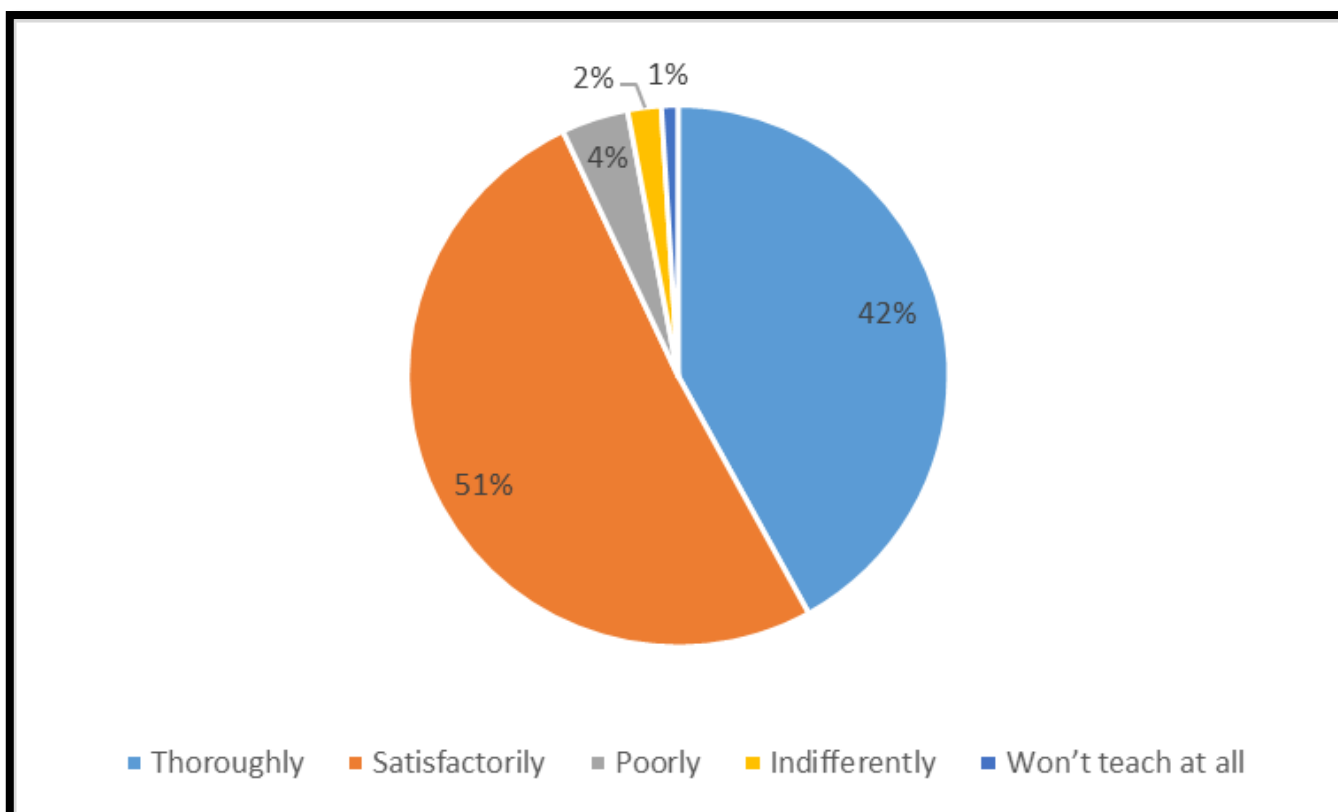
**for**  
**The Fulfilment**  
**of**  
**Annual Quality Assurance Report (AQAR)**  
**2017 – 18**

**National Assessment and Accreditation Council**  
**(NAAC)**

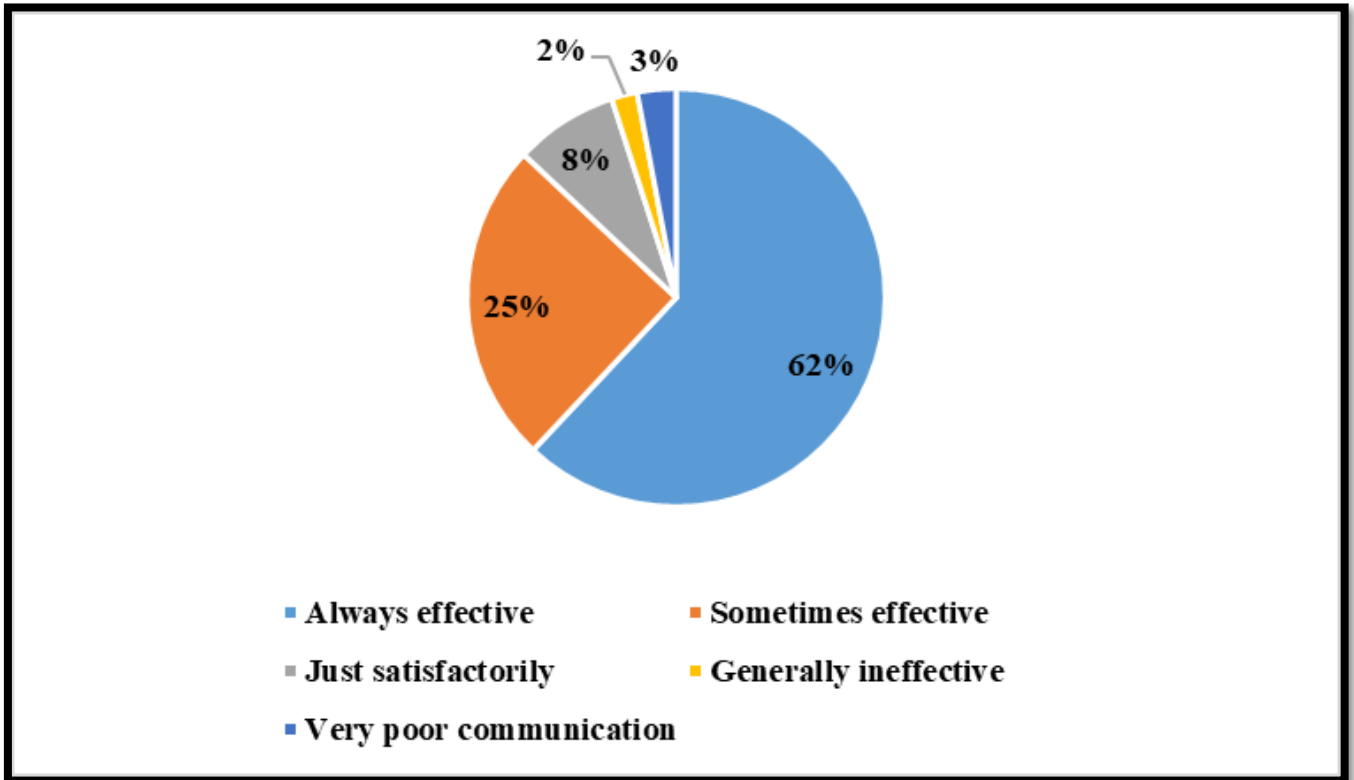
**Que-1**      **How much of the syllabus was covered in the class?**



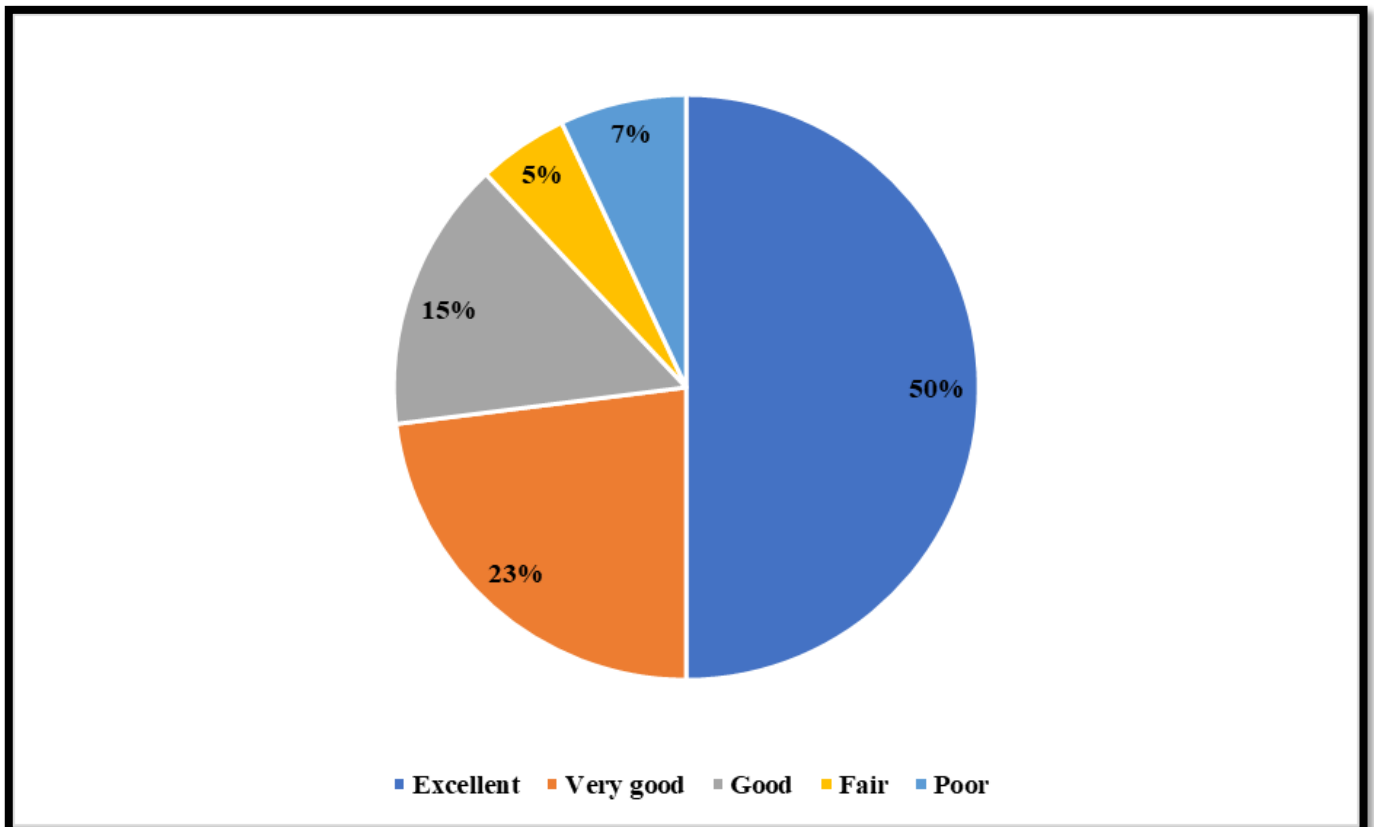
**Que-2**      **How well did the teachers prepare for the classes?**



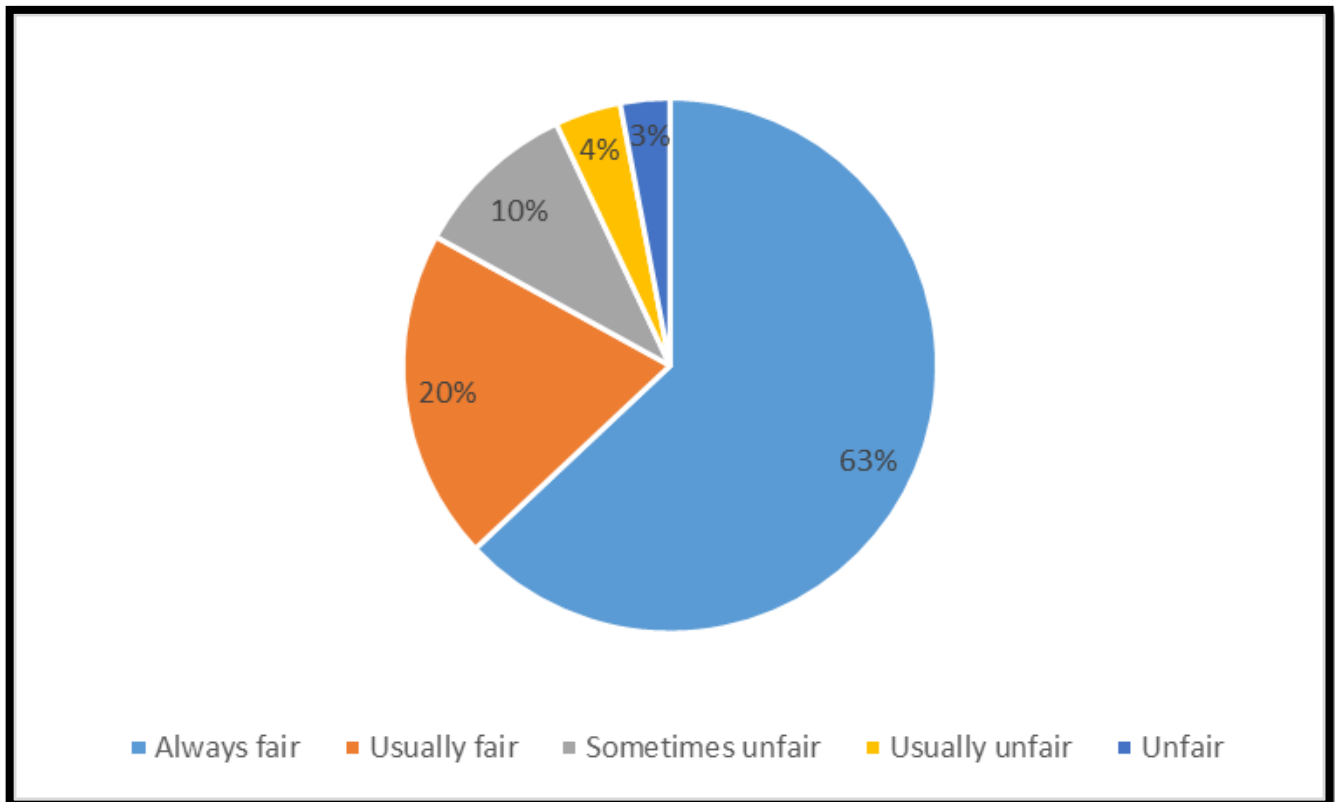
**Que-3**      **How well were the teachers able to communicate?**



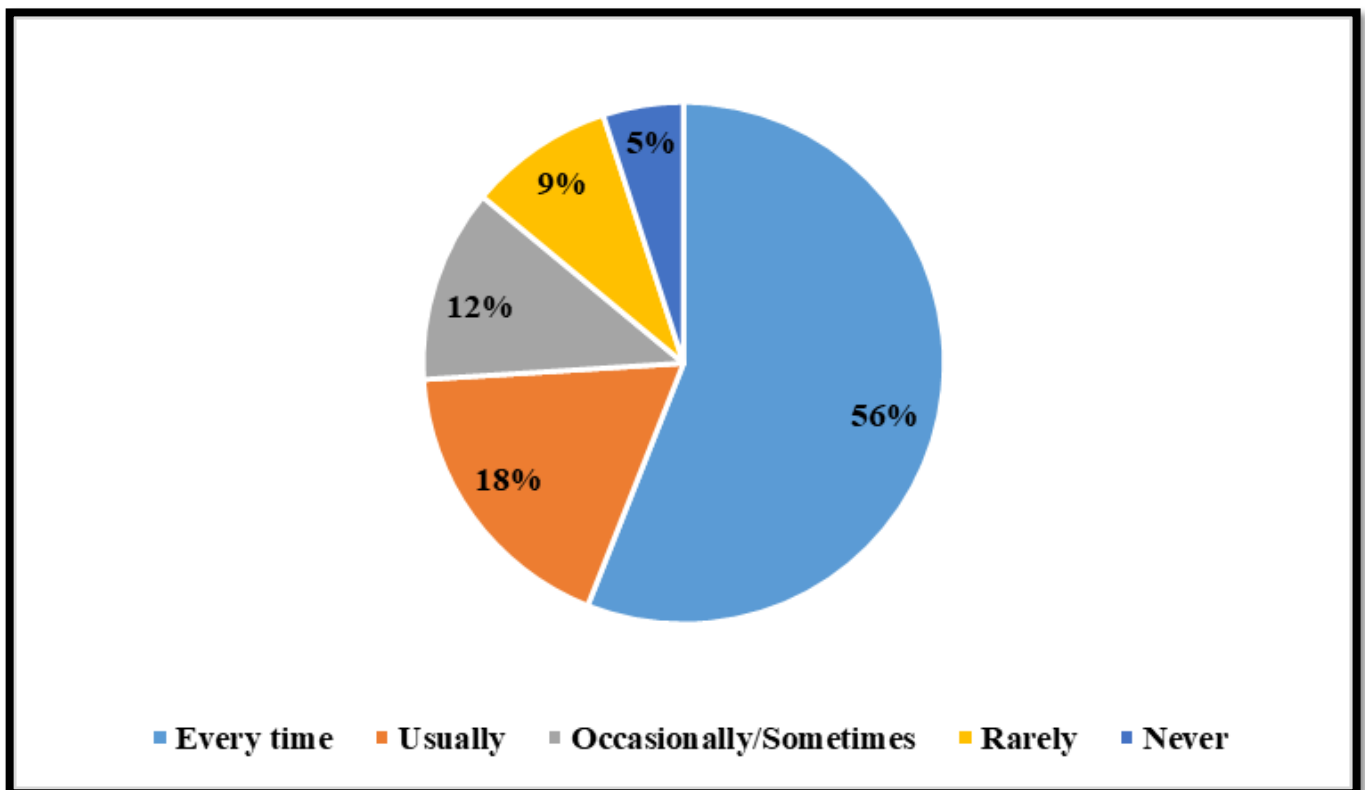
**Que-4**      **The teacher's approach to teaching can best be described as?**



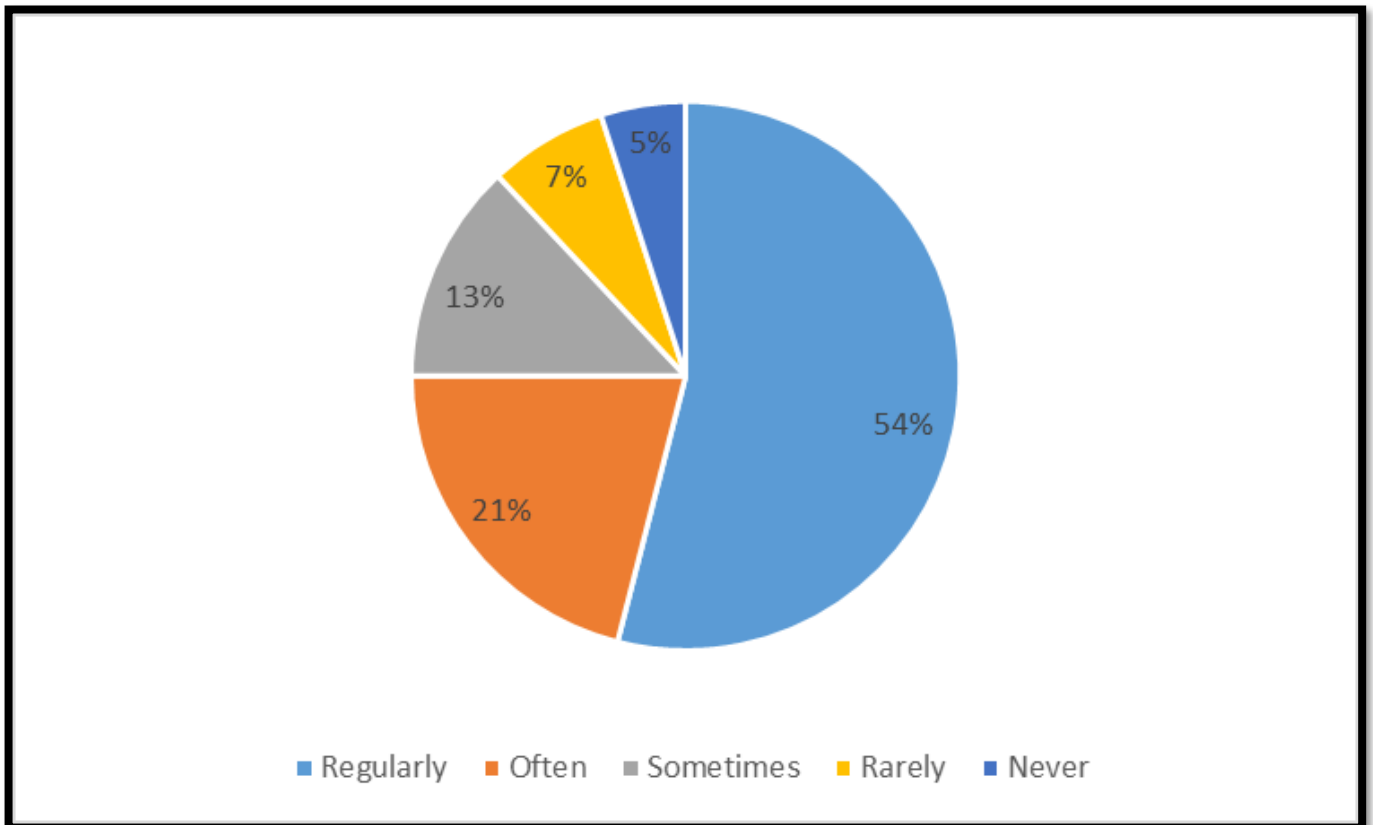
**Que-5 Fairness of the evaluation process by the teachers?**



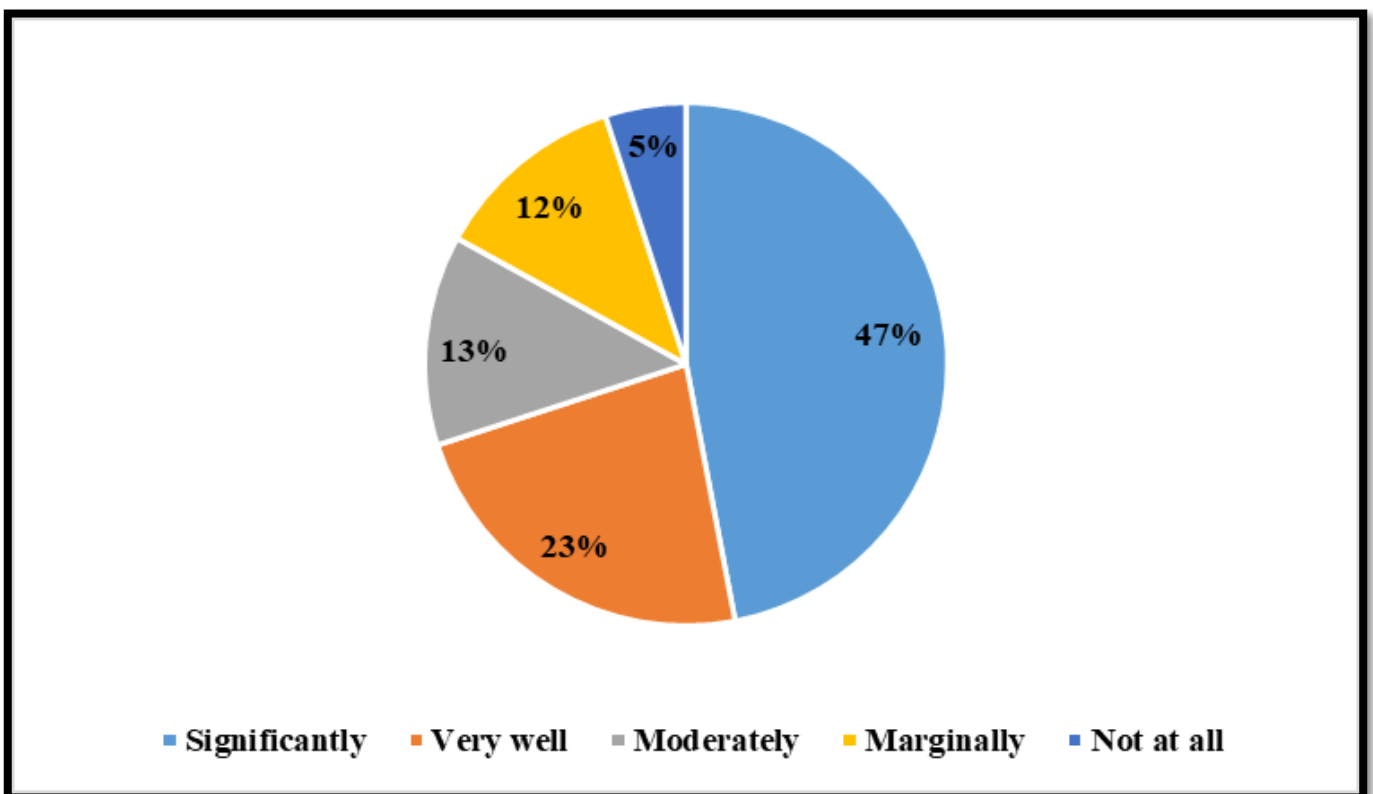
**Que-6 Was your performance in assignments discussed with you?**



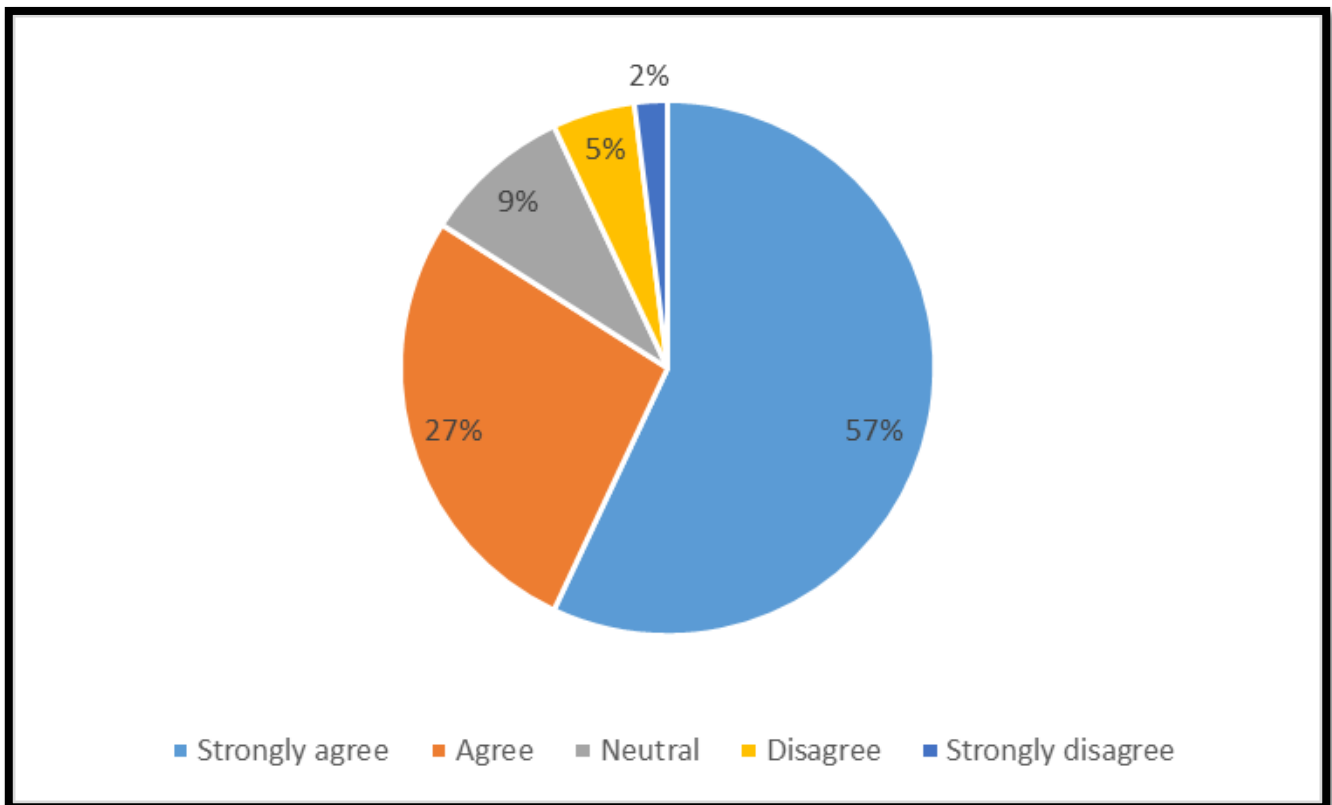
**Que- 7      The institute takes active interest in promoting internship, student exchange, field visit opportunities for students?**



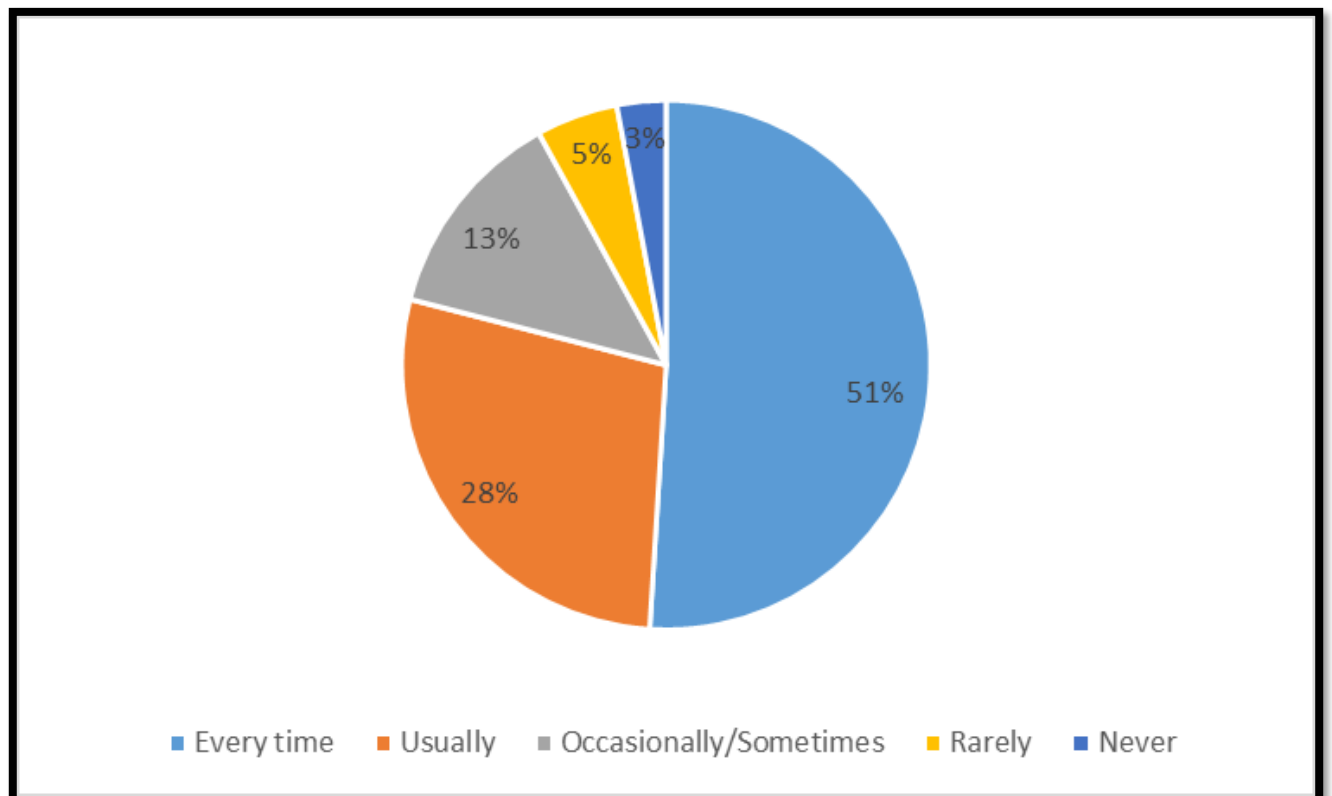
**Que-8      The teaching and mentoring process in your institution facilitates you in cognitive, social and emotional growth?**



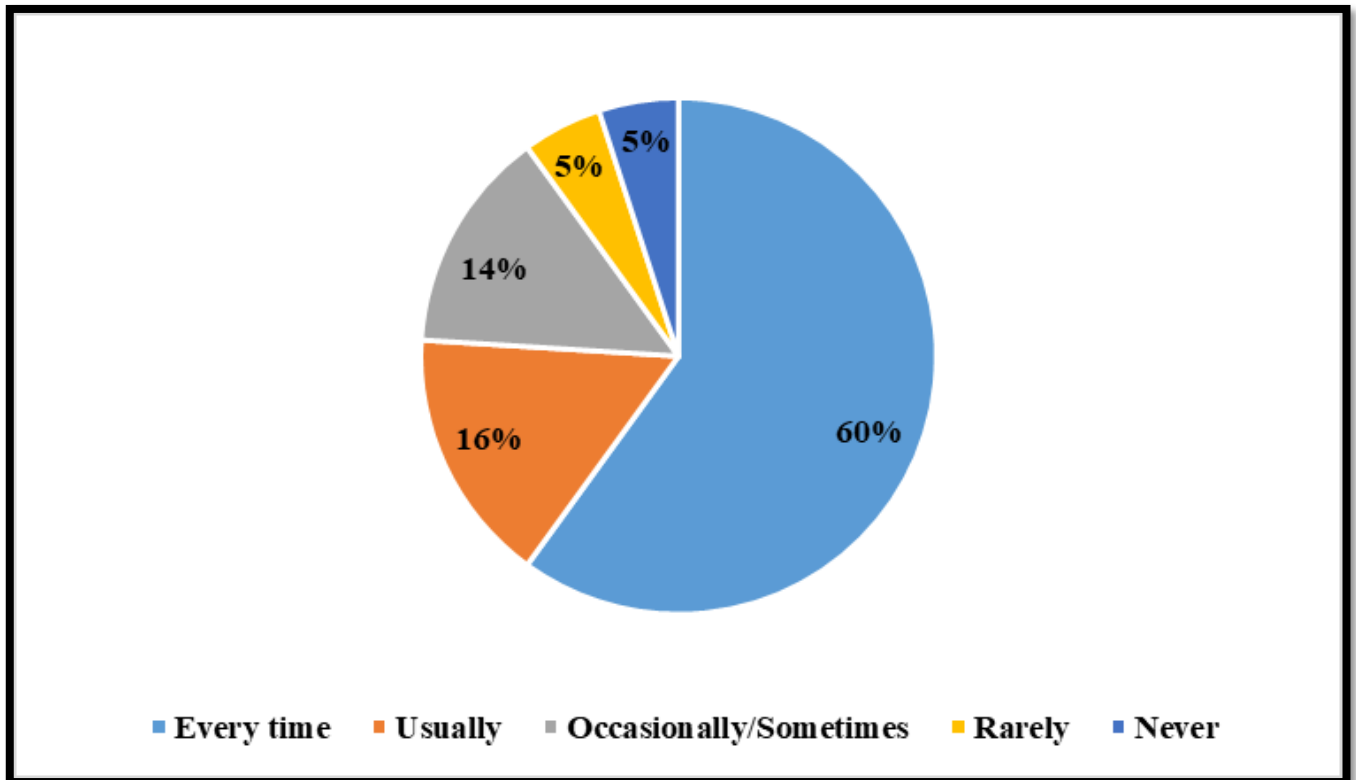
**Que-9 The institution provides multiple opportunities to learn and grow?**



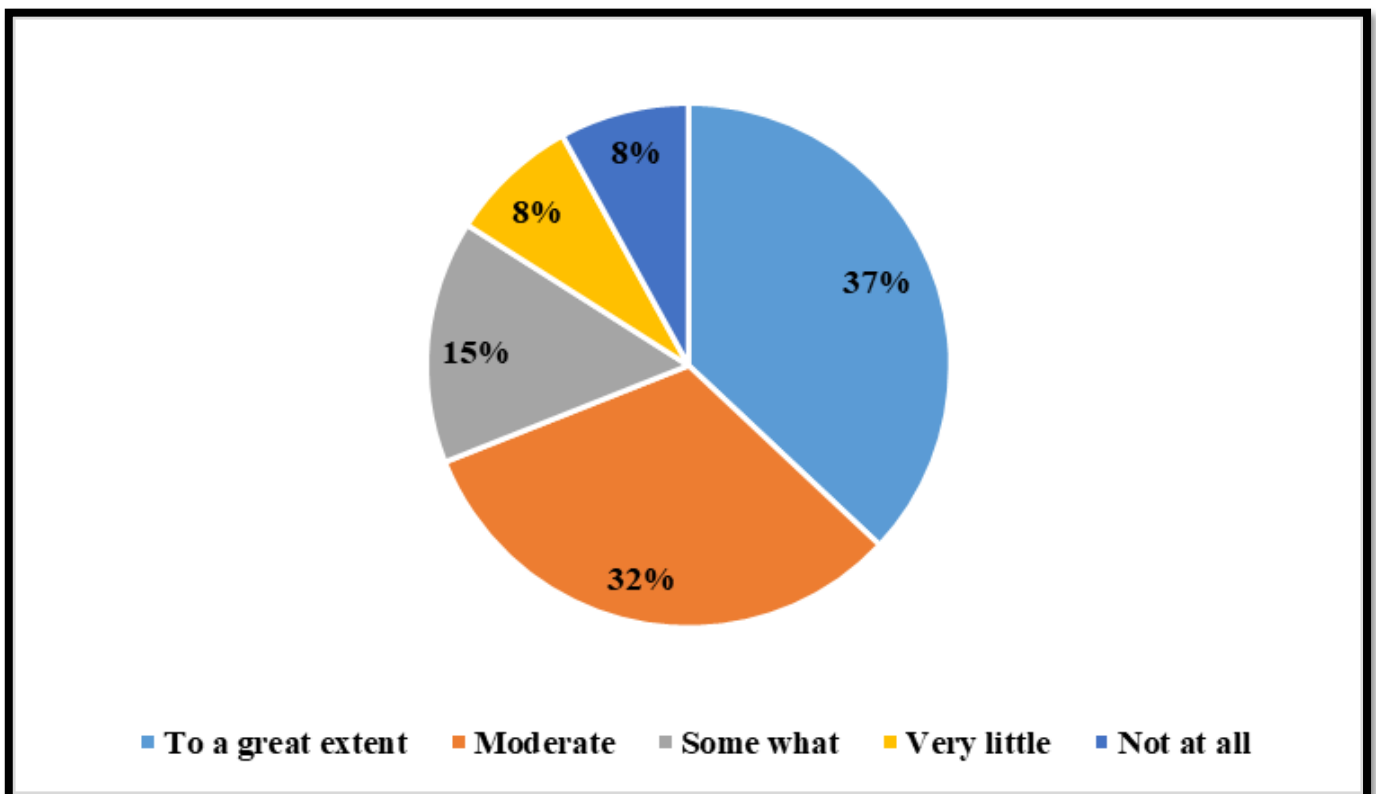
**Que-10 Teachers inform you about your expected competencies, course outcomes and programme outcomes?**



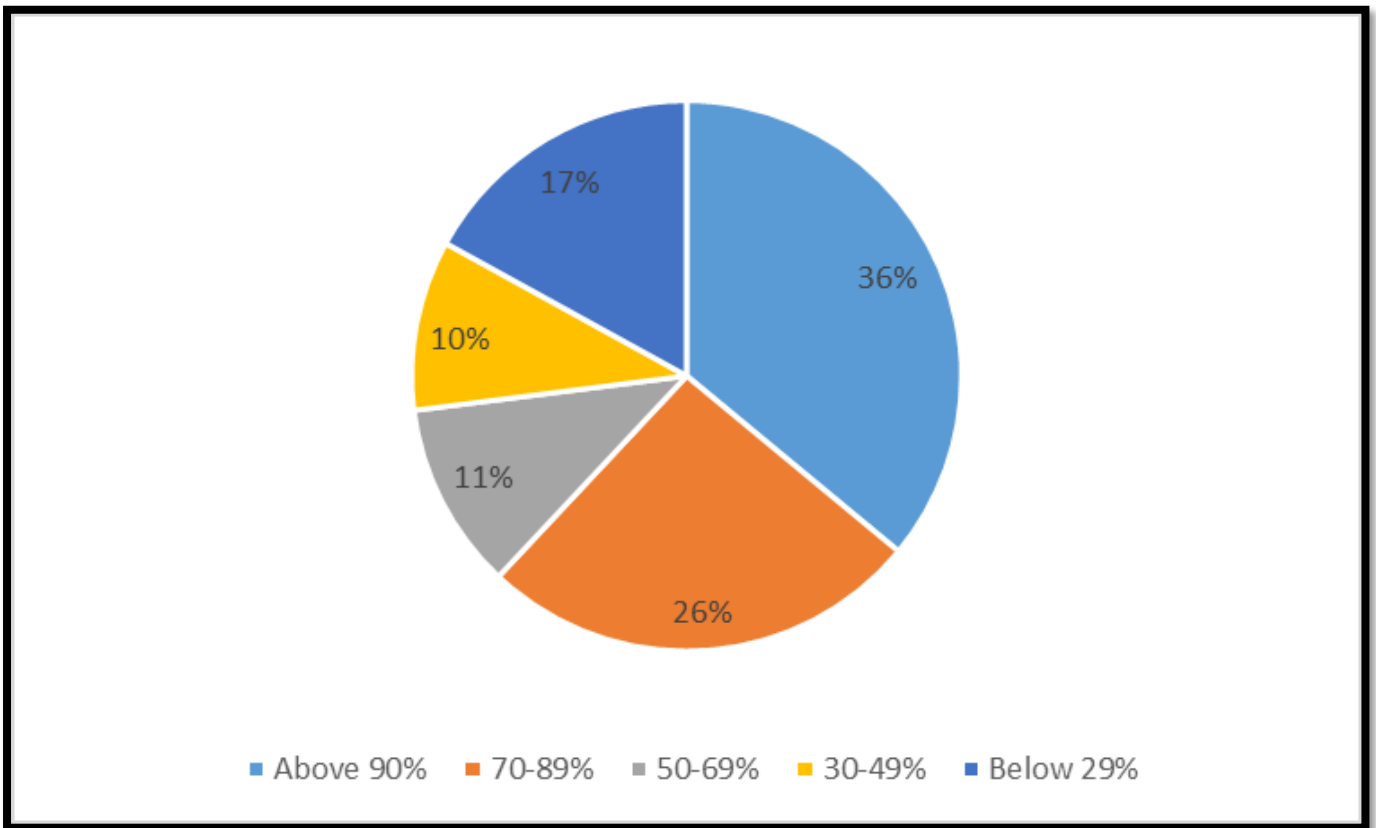
**Que-11 The teachers illustrate the concepts through examples and applications?**



**Que-12 Teachers encourage you to give suggestions to improve teaching learning process?**



**Que-13** What percentage of teachers use ICT tools such as LCD projector, Multimedia, etc. while teaching?



**Que-14** The overall quality of teaching-learning process in our institute is very good?

